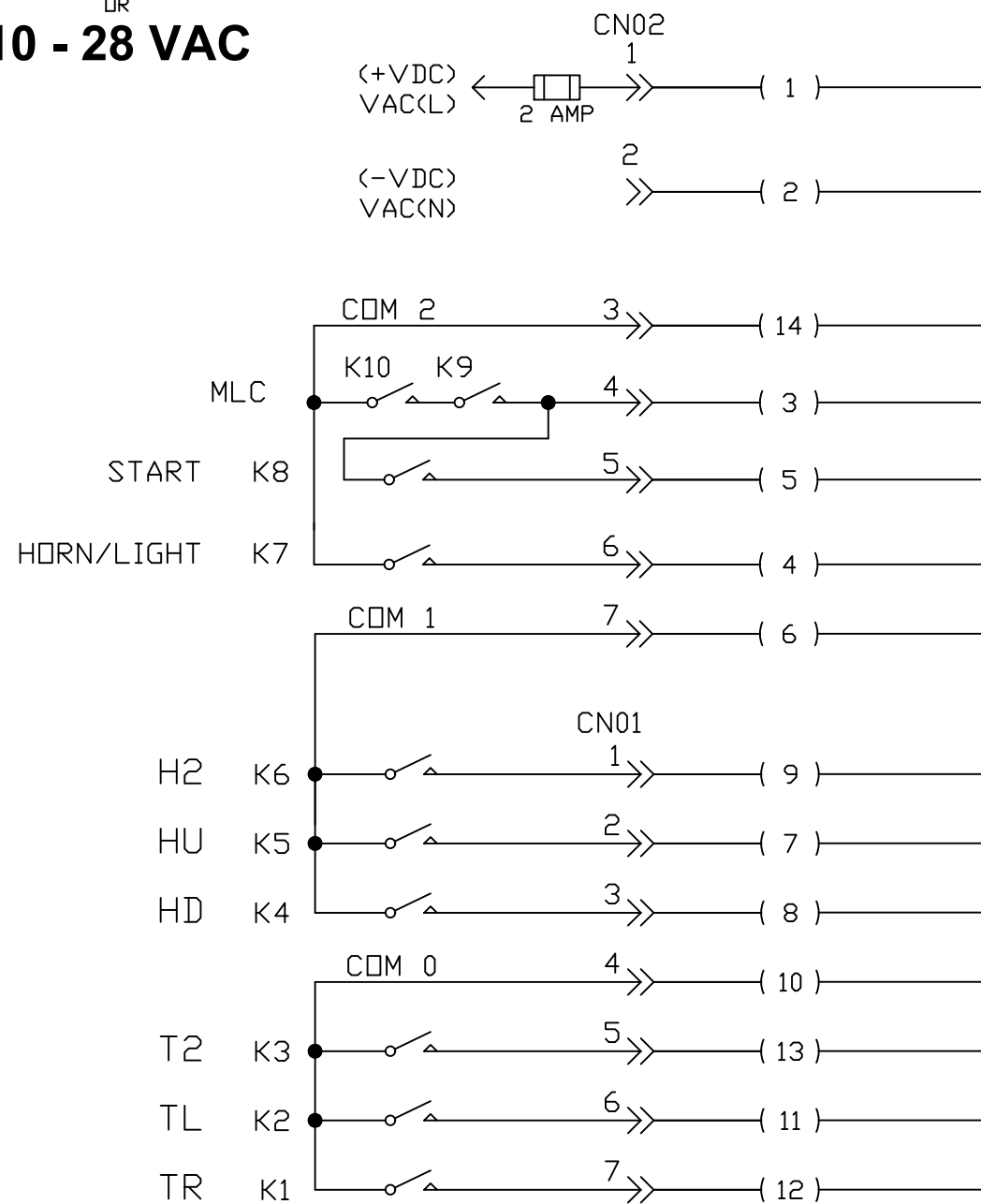


RADIO RECEIVER ENCLOSURE

7 - 36 VDC
OR
10 - 28 VAC

CONTROL CABLE
6 FEET MAX

CONTACT RATINGS:
"MLC" RELAY: 8 AMPS @ 250 VAC
CONTROL RELAYS: 5 AMPS @ 250 VAC



PIGTAIL WIRING
DESIGNATION

- (1) → LOW VOLTAGE IN - or TRANSFER SWITCH
- (2) → LOW VOLTAGE COMMON
- (3) → MLC - or TRANSFER SWITCH
- (4) → HORN/LIGHT ①
- (5) → START
- (6) → COM 1
- (7) → HU
- (8) → HD
- (9) → H2
- (10) → COM 0
- (11) → TL
- (12) → TR
- (13) → T2
- (14) → COM 2
- (15) N/C
- (16) N/C
- (17) N/C
- (YLW\GRN) → GND

① K7 WIRE (4) MUST BE WIRED TO THE CRANES WARNING DEVICE FOR PROPER OPERATOR WARNING AND ANNUNCIATION DURING THE TX ASSOCIATION PROCESS.

-- REVISIONS --

NO.	DATE	DESCRIPTION
0 - 0	04.30.18	DRAWING ISSUED FOR PRODUCTION.
1 - 0	05.14.20	ASSOCIATION PROCEDURE, MODEL NUMBERS UPDATED. -ECJ
2 - 0	07.29.22	UPDATED DRAWING TO LATEST STANDARD. -GFM

WARRIOR 22-2-LVU

CUSTOMER: CERVIS, INC.

DESCRIPTION: MU-9X9-LVU RX WITH PRE-WIRED PIGTAIL

ASSEMBLY #17002502

DRAWN: ECJ

ENGINEER: GFM

SCALE: N/A

SHEET: 1 OF 4

SIZE:
B

DWG NO.

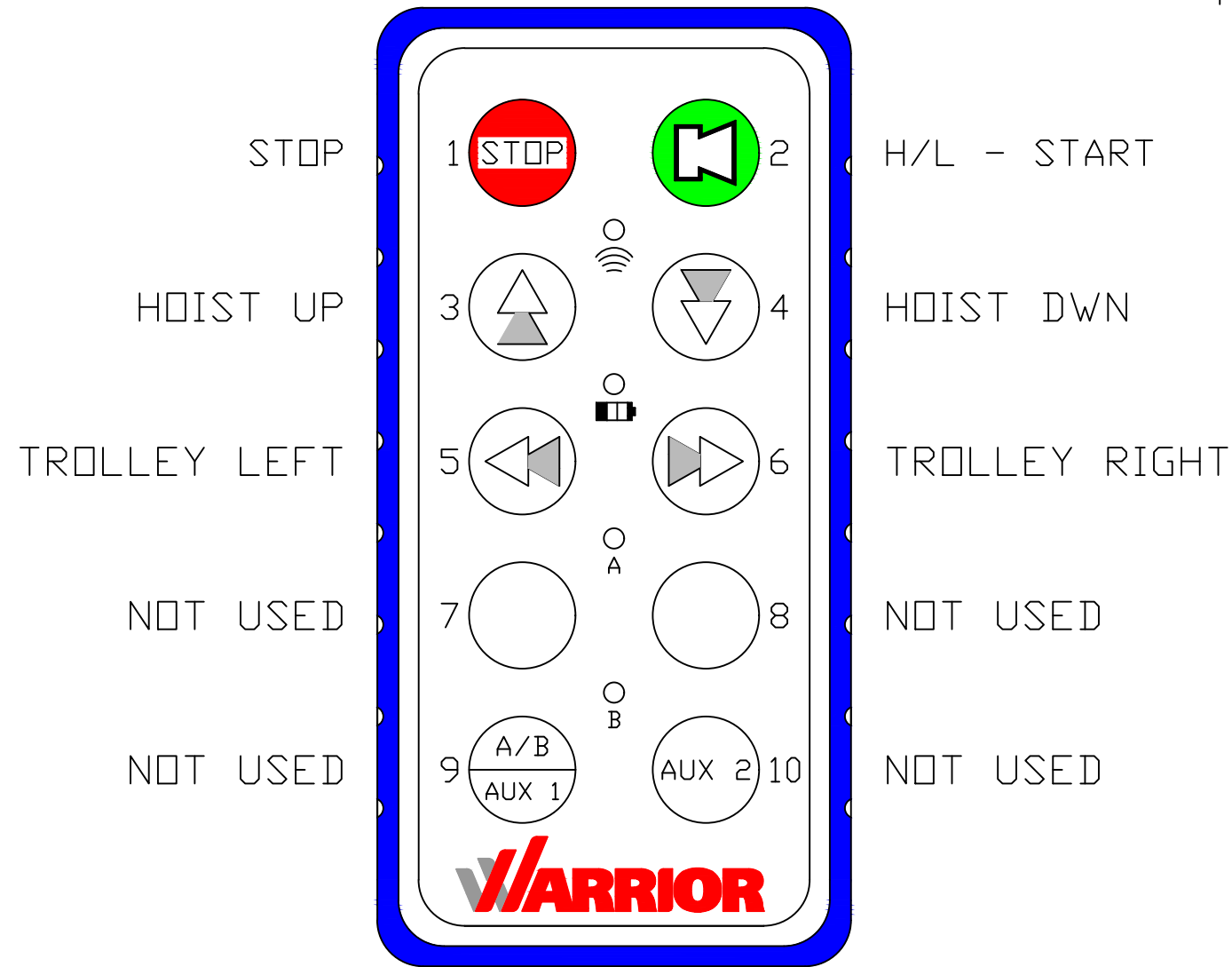
#A100009

REV:

2 - 0

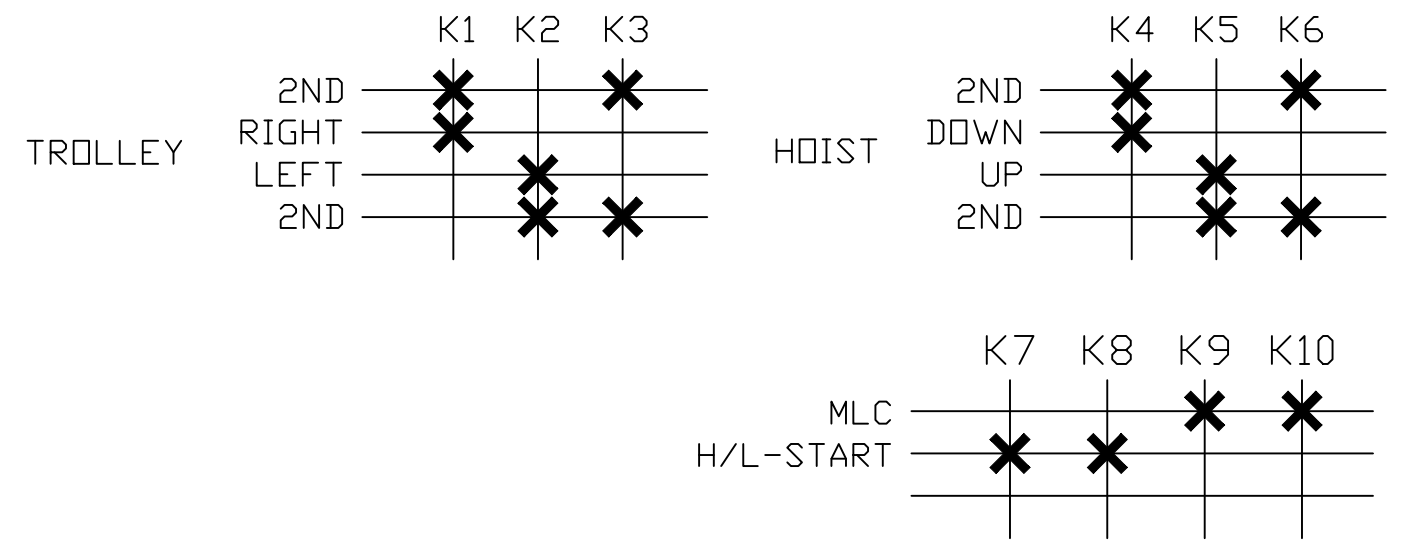


HH2S-9XW08



- 1. TX TIMEOUT = 10 MINUTES
- 2. B1 - B10 ARE 2-STEP PUSHBUTTONS
- 3. B9/B10 ARE USED FOR ASSOCIATION

LED 1 = RADIO TX/RX
 LED 2 = BATT
 LED 3 = N/A
 LED 4 = N/A



START PROCEDURE:

- 1. PRESS B1 (STOP) TO "WAKE" HH.
- 2. PRESS B2 (H/L - START) TO ENERGIZE THE "MLC" RELAY.

STOP:

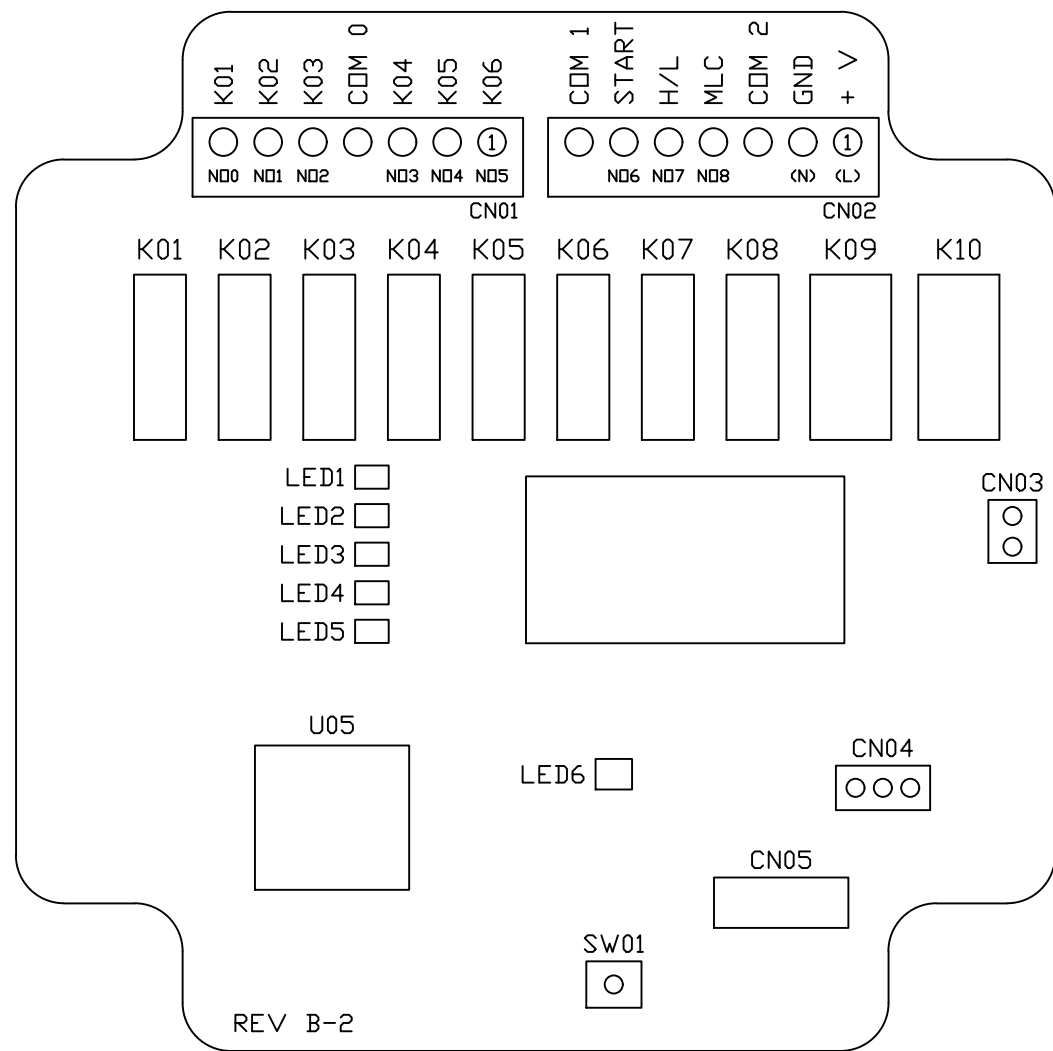
- 1. PRESS B1 (STOP) TO DE-ENERGIZE "MLC" RELAY & ALL OTHER OUTPUTS.

PROGRAMMING NOTES:

- 1. FIRST COME - FIRST SERVE SOFTWARE.

ASSOCIATION PROCEDURE	
1. PRESS THE STOP PB.	
2. WHILE LED B IS ON PRESS B9 & B10 SIMULTANEOUSLY.	
3. WHILE LED'S ARE SCROLLING: PRESS B3 & B4 SIMULTANEOUSLY (HOLD FOR 5 SEC'S)	
LED A WILL START TO BLINK INDICATING ASSOCIATION MODE.	
4. USE B9 TO SEARCH FOR THE TARGET RX.	
5. USE B10 TO SELECT THE TARGET RX.	
6. ID CLEAR (WHILE IN MM): PRESS AND HOLD B9 & B10 SIMULTANEOUSLY - PRESS B1 (STOP)	

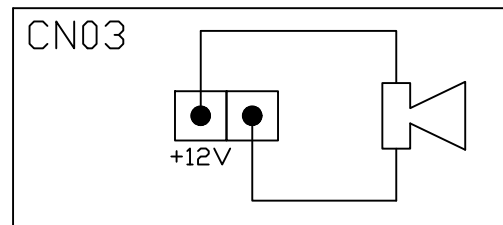
CUSTOMER: CERVIS, INC.					
DESCRIPTION: HH2S-9XW08 PROGRAMMING DETAILS					
ASSEMBLY #15100551					
DRAWN: ECJ	SCALE: N/A	SHEET: 2 OF 4	SIZE: B	DWG NO. #A100009	REV: 2 - 0
ENGINEER: GFM					



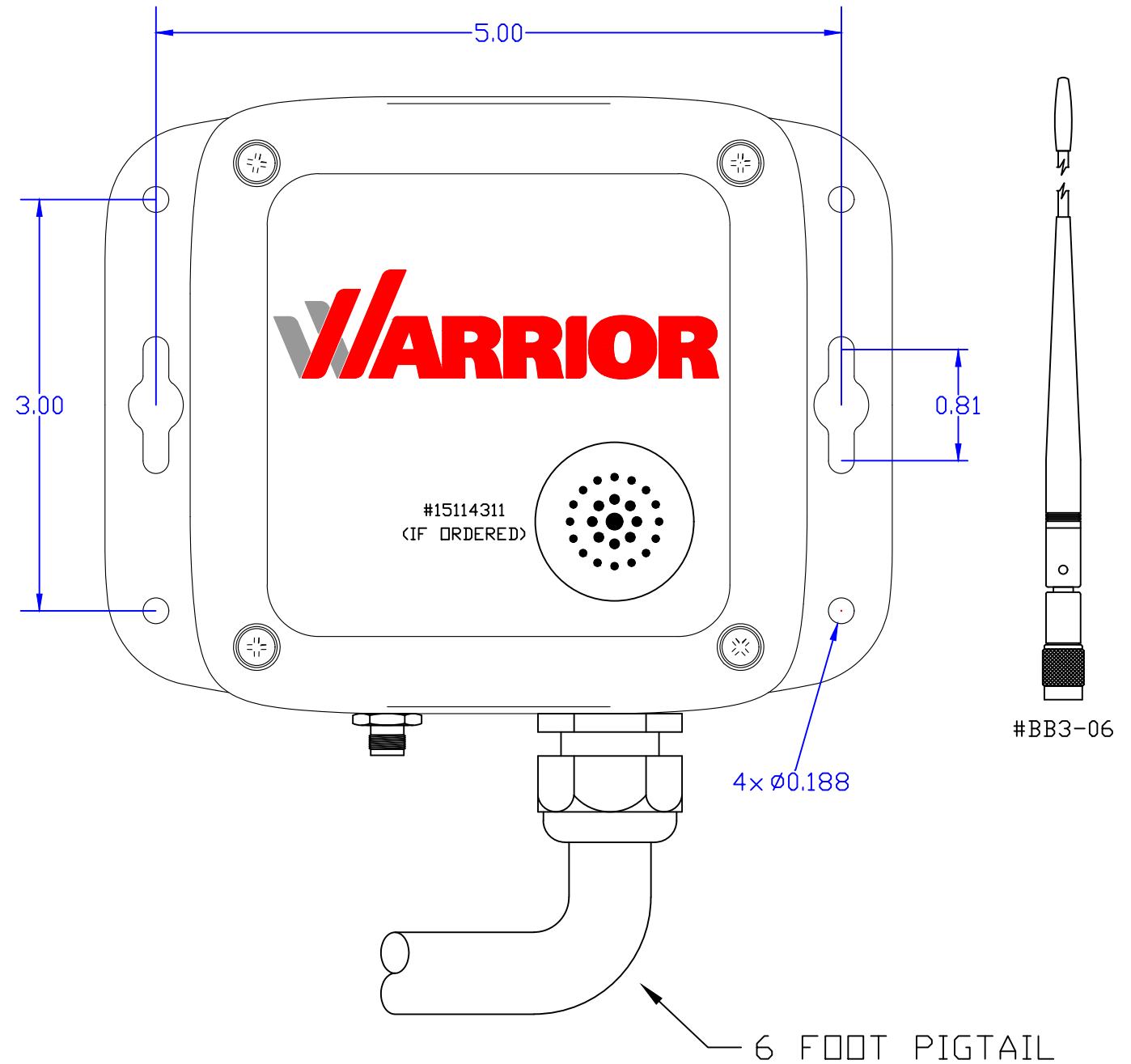
MU-9X9
"PCB LAYOUT"

DIAGNOSTIC LED'S:

LED 1	HEARTBEAT
LED 2	TX
LED 3	RX
LED 4	OUTPUT
LED 5	12 VDC
LED 6	STROBE



** BUZZER-MOUNTS TO LID
#15114311 (OPTIONAL)



** ASSOCIATION IS OPEN FOR 2-MINUTES AFTER THE RX IS POWERED ON.

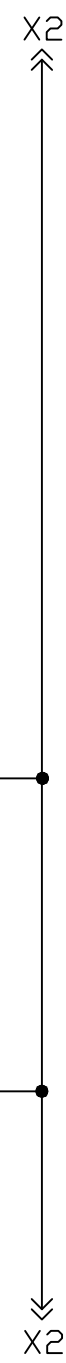
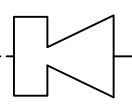
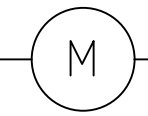
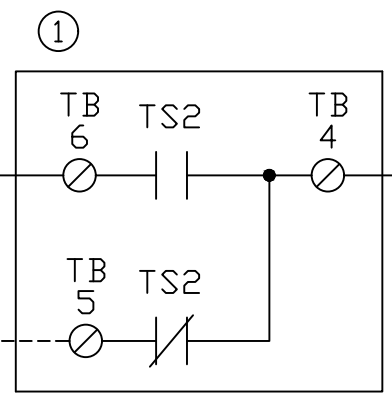
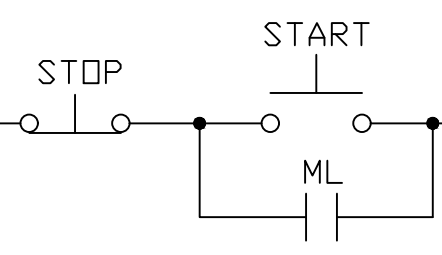
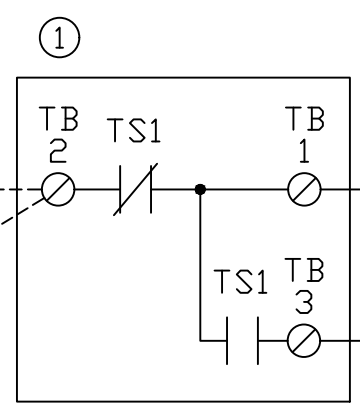
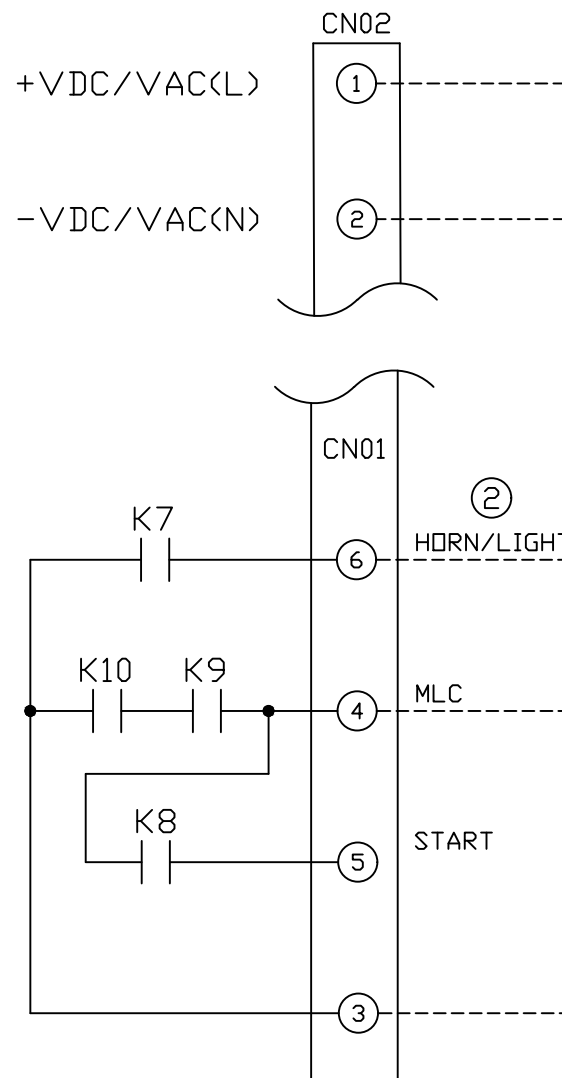
CUSTOMER: CERVIS, INC.
DESCRIPTION: BOARD/ENCLOSURE DETAILS



DRAWN: ECJ	SCALE: N/A	SHEET: 3 OF 4	SIZE: B	DWG NO. #A100009	REV: 2 - 0
------------	------------	---------------	---------	------------------	------------

CERVIS RADIO RECEIVER

TYPICAL MAINLINE



- ① TRANSFER SWITCH SHOWN IN "RADIO" MODE - FOR REFERENCE ONLY. TRANSFER SWITCH IS SUPPLIED BY CUSTOMER.
- ② TYPICAL WIRING OF THE HORN/LIGHT (ASSOCIATION) RELAY. FOR PROPER OPERATOR WARNING AND ANNUNCIATION DURING THE TX ASSOCIATION PROCESS.

CUSTOMER: CERVIS, INC.					
DESCRIPTION: TYPICAL MAINLINE INTERFACE					
DRAWN: ECJ	SCALE: N/A	SHEET: 4 OF 4	SIZE: B	DWG NO. #A100009	REV: 2 - 0
ENGINEER: GFM					